



Insulated Sectional Overhead Doors

Applications

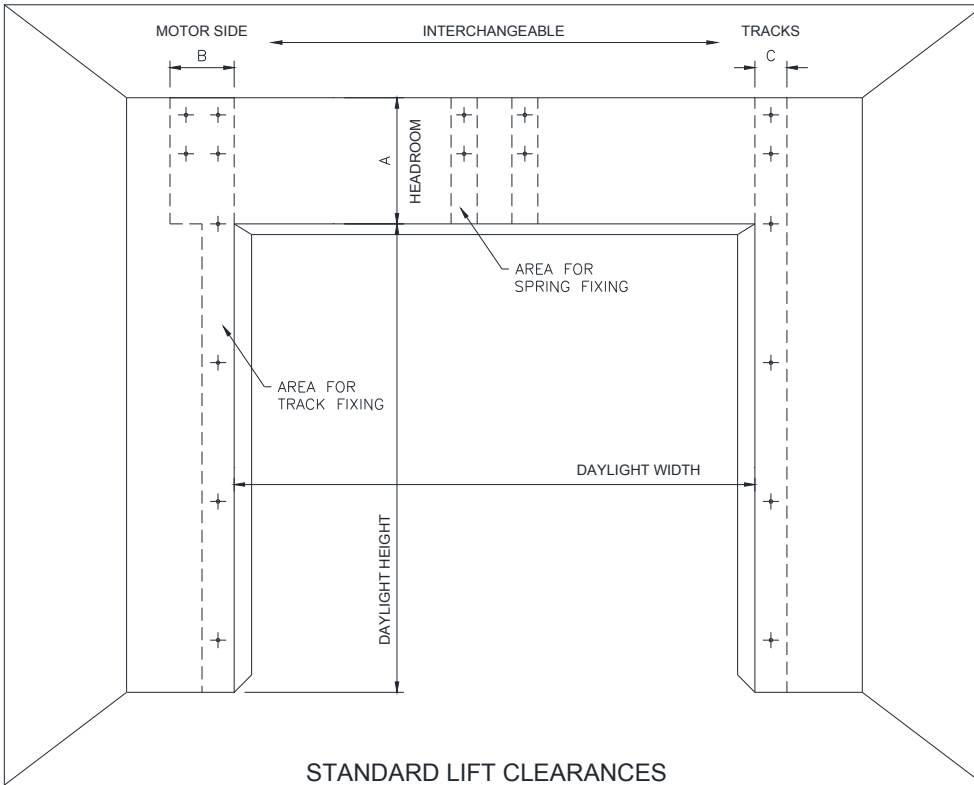
Suitable for cold climates, coolstores, industrial applications and acoustic insulation.

Features

- Manufactured imported stipple foam filled panels with industrial grade hardware.
- Weathering provided by wedge action of tracks.
- Adjustable rollers provide rattle proof doors.
- Quick, easy opening provided by push-up or handchain override.
- Door balances in any position.
- Available in a limited range of RAL Colorsteel colours or wet sprayed to exterior surfaces. Internal faces are white.
- Operated manually, handchain or motorised.
- Doors are custom made to fit the size of opening.
- Branches in Auckland, Wellington and Christchurch

*Over 55 years of manufacturing experience and continuous refinement.
Service and repairs, 24 hours a day, on all makes of commercial doors.*

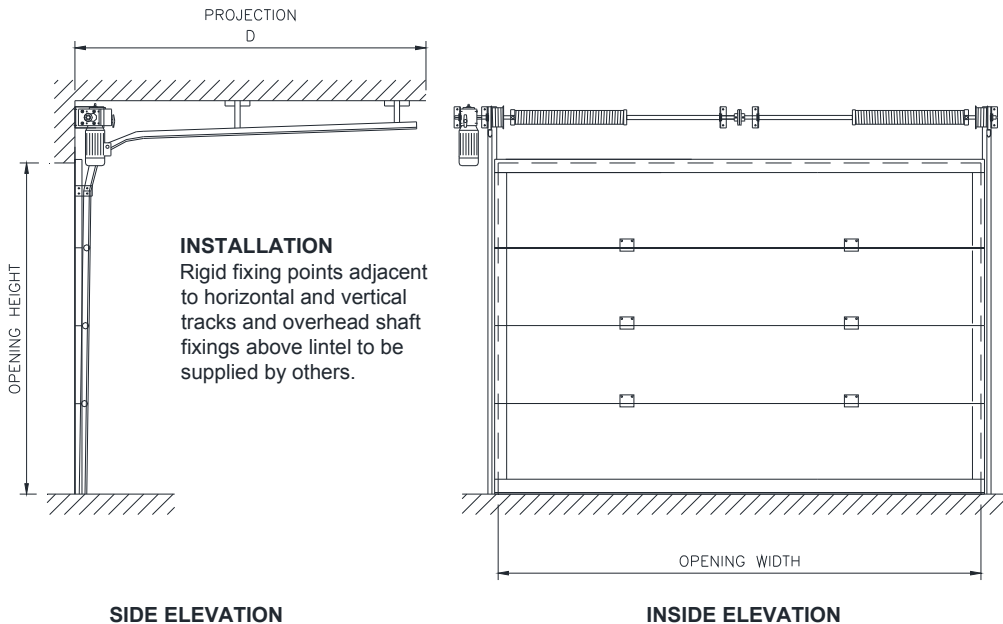
Insulated Sectional Overhead Doors - Specifications



STANDARD LIFT CLEARANCES

DOOR CONSTRUCTION	MAX OPENING SIZE		HEADROOM A	SIDEROOM MOTOR B	SIDEROOM TRACKS C	PROJECTION D
	WIDTH	HEIGHT				
INSULATED PANEL	6.0m	8.0m	450mm	350mm	127mm	DLH + 500mm

Clearances and maximum sizes vary for other configuration options. Check with your nearest Metalbilt branch for confirmation of clearances required for specific door sizes as requirements may vary depending on door weight.



INSTALLATION
Rigid fixing points adjacent to horizontal and vertical tracks and overhead shaft fixings above lintel to be supplied by others.

DOOR PANELS

1. 40mm thick panels filled with foamed polyurethane, a moisture resistant insulant, sandwiched between two independent 0.45mm Colorsteel sheets.

2. Panels available in 7 RAL colours:

- White (standard)
- Blue
- Red
- Silver
- Grey
- Brown
- Ivory

Note: Colour only applied to exterior of panel. Internal face is white.

3. Panels fitted with steel reinforcement plates at the hinge fixing areas.

OPERATION

Manual push-up up to 4m high.

Chain hoist recommended over 3m high up to maximum height.

Three phase or single phase Jackshaft motorising with push-up or handchain override in event of power failure. Assemblies are supplied complete with reversing starter and limit switches. Door controllers to accept signals from a range of activation features are also available.

CONFIGURATION OPTIONS

- Standard Lift
- Low Headroom (200mm)*
- Lift Clear*
- Follow-the-roof*
- Full Vertical Lift*

*Refer to Metalbilt® for clearances and size limitations applying to these configurations.

We reserve the right to alter specification without notice and without incurring obligation.

Contact us for details of your nearest Metalbilt® representative.

Auckland
Postal Address
 PO Box 71169 Rosebank
 Auckland 1348 New Zealand
Street Address
 26 Timothy Place Avondale
 Auckland 1026 New Zealand
Phone 09 828 1167
Fax 09 828 6358
Email mbilt.auck@rcrtom.com.au

Christchurch
Postal Address
 PO Box 6033 Upper Riccarton
 Christchurch 8442 New Zealand
Street Address
 25 Baigent Way Middleton
 Christchurch 8024 New Zealand
Phone 03 338 2600
Fax 03 338 4386
Email mbilt.chch@rcrtom.com.au

Wellington
Postal Address
 PO Box 38933 Wellington Mail Centre
 Lower Hutt 5045 New Zealand
Street Address
 33 Marsden Street Melling
 Lower Hutt 5010 New Zealand
Phone 04 568 2933
Fax 04 568 7337
Email mbilt.well@rcrtom.com.au



www.metalbilt.co.nz